



CAMP PERRY

2026

SUMMER CAMP

LEADERS GUIDE



Scouting  **America**

Rio Grande Council



A LEADER'S GUIDE

TO PROGRAM , POLICIES, AND PROCEDURE

WITH ADDITIONAL FORMS AND IMPORTANT DOCUMENTS



JOIN A CENTURY OF SCOUTING IN SOUTH TEXAS

Welcome to Camp Perry

Nestled along the picturesque banks of the Arroyo Colorado in the heart of South Texas, our camp stands as the oldest continuously operating Scout camp in the state of Texas. Rich in tradition and brimming with opportunities, Camp Perry is the perfect setting for a summer filled with unforgettable experiences.

This season, we're thrilled to blend our cherished traditions with exciting new offerings, creating a unique camping experience that you'll find only at Camp Perry. Our aim is to provide every Scout with a fun, engaging, and enriching environment where both learning and enjoyment are prioritized.

During the day, our camp buzzes with the energy of Scouts embarking on their merit badge classes, from pioneering and kayaking to sustainability and archery there's something for everyone. As evening falls, the adventure continues with our Open Areas program—whether it's mastering chess moves, crafting artistic creations, honing archery skills, or cooling off in the pool, there's always something to pique your interest.

But that's not all—special to Camp Perry are our exclusive evening activities. Imagine canoeing under a breathtaking sunset or fishing by starlight along the serene Arroyo Colorado. These are moments that promise not just fun, but a deep connection with nature and fellow Scouts.

At Camp Perry, we believe that every Scout's journey is important. Whether you're here to advance through the ranks or to soak up every bit of fun and learning our program offers, we are dedicated to making your stay both productive and memorable.

We can't wait to welcome you to Camp Charles F. Perry, where your summer adventure awaits, filled with new skills, new friends, and memories that will last a lifetime. See you at camp!

Yours in Scouting,

Gabriel Rodriguez
Camp Director

Rolando Hernandez
Program Director

99 YEARS OF TRADITION

R.W. LISTON
AMPHITHEATER

CAMP PERRY

Rio Hondo, TX



**Longest continuously
operated Scout Camp in the
state of Texas**



33 MERIT BADGES AND ACTIVITIES

SWIMMING	LEATHERWORKING
INSTRUCTIONAL SWIM	WELDING
LIFESAVING	MOVIE MAKING
PADDLE BOARDING	SUSTAINABILITY
CANOEING	ARCHERY
KAYAKING	RIFLE SHOOTING
MOTOR BOATING	SHOTGUN SHOOTING
ROWING	PHOTOGRAPHY
CAMPING	BIRD STUDY
WILDERNESS SURVIVAL	MAMMAL STUDY
PIONERING	NATURE
COOKING	SEARCH AND RESCUE
FIRST AID	FISHING
SAFETY	MULTI-SPORT
ART	EMERGENCY PREPAREDNESS
FISH & WILDLIFE MANAGEMENT	POTTERY

JUNE 21-27, 2026

REGISTER TODAY

WWW.RIOGRANDECOUNCIL.ORG

RIO GRANDE COUNCIL
YOUTH \$149

OUT OF COUNCIL YOUTH: \$149

ADULT: \$199



LEADERSHIP TEAM



Gabriel Rodriguez
Camp Director



Rolando Hernandez
Program Director



Michael Hall
Camp Commissioner



Daniel Mendez
Chief of Staff



Emma Smith
STEM Coordinator



Christopher Solis
Camp Ranger



Oscar Garza
VP-Program



Miguel Rodriguez
Council Commissioner



Andrew Phillips, M.D.
Council President

FOR LEADERS BEFORE CAMP



Below are the items due at check-in for ALL attending during the week!

1. Scout Medication Log/Routine Drug Administration Record
2. Adult BSA Youth Protection Certification Copy
3. Adult Leader Registration Card Copy
4. Annual Health & Medical Records Copy for ALL ATTENDING FOR THE WEEK
5. Out of Council Units ONLY - Proof of Accident Insurance

To comply with the Texas Youth Camp Safety and Health Act, all leaders must ensure that all adults who will be in camp are listed on the adult leader roster, which must be submitted to the Rio Grande Council Office no later than the Leader Orientation at Camp Perry.

CHECK-IN

You need these forms to check in:

1. **Troop roster:** A copy of your Scouting America generated roster with the names of those youth and adults in attendance highlighted. Must be the PDF version downloaded from my.scouting.org.
2. **One copy of a severe weather hazard training certificate** (at least one adult must have the training)
3. **Medical forms** (see details below) for each person (alphabetical order by last name)
4. For **Each Adult**
 - a. Copy of a valid Safe Guarding Youth Training certification if not listed on the official Troop roster. (Training valid for one year) Note: Camp can accept a PDF of the SGY roster printed from my.scouting.org for the troop with attendee names highlighted.
 - b. Adult in Camp State Compliance Form (see Appendix)

If any of these forms are missing, the camp cannot allow the adult to remain overnight.

Health Forms: A copy of the complete Annual Health and Medical Record (parts A, B, and C) for all Scouts and adult leaders attending camp. We will return all medical forms to the troop during our check-out process after camp concludes. Many troops put their forms in a binder or folder for ease of handling and return. This is helpful to camp staff as well. Please bring forms in alphabetical order by last name. The State of Texas and Scouting America require all participants spending at least one night in the campsite to submit all three parts of the Scouting America health and medical record (including a physical), signed and dated within the previous 12 months.

Camp check-in begins at 1 PM on Sunday, June 21, 2026

Process: When you first arrive at camp, a camp staff member, who will serve as your Staff Guide for the orientation period, will meet your troop to begin the check-in process and prepare your scouts for swim checks and a tour of camp.

- One adult leader is responsible for checking in the troop at camp headquarters and taking medical forms/medications to the Health Lodge.
- Once checked in, your troop will be guided to the Dining Hall for a group picture.
- After your troop sets up camp, you will be taken to the pool for swim checks.

ALL TRAININGS MUST BE COMPLETED PRIOR TO ARRIVAL AT CAMP. ALL CERTIFICATES AND FORMS MUST BE PRINTED PRIOR TO ARRIVAL AT CAMP.

Medications: ALL medications, except those specifically required to be carried by the individual, MUST be turned in to the camp Health Officer upon arrival. They will be kept locked up for the duration of the week. Scoutmasters need to complete the medication log located in the appendix. Please ensure that any Scouts taking medications report to the Health Lodge to receive them at the required times.

Vehicles: No vehicles are allowed beyond the camp office.

Campsites: Troops have found it helpful to bring a garden wagon to help transport items from the parking lot to their campsite. We may have wheelbarrows available that may be checked out with the Quartermaster.

Flag Retreat & Dinner: All Scouts should report to the parade grounds in field uniforms for the flag retreat. All Scouts will be released from the parade grounds to the dining hall. All Scouts should walk (rather than run) to the West Entrances of the Dining Hall, wash their hands, and proceed to their assigned tables.

Swim Check: Scouts must complete a swim check and wear appropriate swim attire. All scouts will be taken to the pool for the Swim Test Classification. Anyone not taking the swim check during summer camp will still be allowed to swim, but will be classified as a "Non-Swimmer."

Onsite Leaders' Orientation Meeting: At least one adult from each troop MUST attend the leaders' introduction meeting on the day of check-in. The troop SPL is also encouraged to attend the meeting. Scheduling and location change will be discussed at this time. At this meeting, leaders will need to turn in a headcount for the Scoutmaster Dinner.



FOR LEADERS – DURING CAMP

At no point during the week should a troop remain at camp without the Guide to Safe Scouting's two-deep leadership safety procedure in place. Leaders are encouraged to periodically check on scouts during merit badge classes.

In the warm summers at Camp Perry, we would like to ask that all leaders help us prevent dehydration. If a Scout claims they have a headache, stomachache, are homesick, or aren't hungry, then ask them to drink water, as they may be on the verge of dehydration. We recommend a minimum of eight fluid ounces of water per hour for Scouts in this environment.

Camp Perry will have a list of service projects readily available for adult leaders to participate in. If you have a trade or skill you would like to offer, notify our commissioner team so that they may assign you to a service project to improve camp life.

Scout leaders also need to attend the daily scoutmaster meeting. This meeting provides troop leadership with the opportunity to discuss problems, schedule updates, and sign up for various activities. **It is mandatory that a minimum of one leader per troop attends this meeting.**

The scoutmaster needs to oversee that the SPL (or his designee) attends the daily SPL meeting in the OA Lodge. This meeting will take place after lunch and will provide SPL's the opportunity to express concern, collaborate, and volunteer for events. They will also receive information regarding the daily campsite inspection, upcoming events, announcements, changes in program, and other information. **It is mandatory that each troop is represented at these daily meetings.**





PROGRAM SCHEDULE

DAILY SCHEDULE

6:00AM	Sunrise Activity	Parade Ground
7:30AM	Morning Flag	Parade Ground
7:45AM	Breakfast	Dining Hall
8:45AM	Leader's Meeting	Leader's Lounge
9:00AM	First Period	Program Areas
10:10AM	Second Period	Program Areas
11:20AM	Third Period	Program Areas
12:30PM	Lunch	Dining Hall
1:30PM	SPL Meeting	Commissioner
1:50PM	Fourth Period	Program Areas
3:00PM	Fifth Period	Program Areas
4:15PM	Open Areas	Program Areas
6:15PM	Evening Flag	Parade Ground
6:30PM	Dinner	Dining Hall
7:30PM	Evening Program	Dining Hall
9:00PM	Study Hall	Dining Hall
9:00PM	Troop Activities	Camp Sites
11:00PM	Lights Out	Dining Hall

MERIT BADGE SCHEDULE

Aquatics (Pool)

	1st Period	2nd Period	3rd Period	Lunch	4th Period	5th Period
	9:00 AM - 10:00 AM	10:10 AM - 11:10 AM	11:20 AM - 12:20 PM	12:30 PM - 1:40 PM	1:50 PM - 2:50 PM	3:00 PM - 4:00 PM
Instructional Swim				LUNCH		
Swimming						
Lifesaving	2 Hour Class					

Aquatics (Docks)

Canoeing				LUNCH		
Kayaking						
Rowing						
Motorboating						

Handicraft

Art				LUNCH		
Welding						
Movie Making						
Graphic Arts						
Leatherworking						
Photography						
Pottery						

Health Lodge

First Aid				LUNCH		
Safety						

MERIT BADGE SCHEDULE

Outdoor Skills

	9:00 AM	10:10 AM	11:20 AM	12:30 PM	1:50 PM	3:00 PM
Camping				LUNCH		
Wilderness Survival						
Multisport						
Pioneering						
Cooking						
Emergency Preparedness						
Search & Rescue						

Nature

Nature				LUNCH		
Sustainability						
Mammal Study						
Fishing and Fish & Wildlife Management	2 Hour Class				2 Hour Class	

Range and Target Activities

Archery				LUNCH		
Rifle Shooting	2 Hour Class					
Shotgun Shooting					2 Hour Class	

First Year Camper Program

First Year Camper	CP^2	CP^2	CP^2	LUNCH	Choose your MB	Choose your MB
-------------------	------	------	------	-------	----------------	----------------

FIRST YEAR CAMPER PROGRAM

Camp Perry Pioneers (CP^2)

About the Program

The First Year Camper Program (CP^2) will be held every morning. Throughout the week, Scouts will work on a variety of requirements ranging from Scout through First Class. Each day will focus on new skills, including knots and lashings, first aid, cooking, and more. Participants will also have the opportunity to earn their Firem'n Chit and Totin' Chip. In addition, Scouts will take part in a fun overnight camping experience and complete a short hike. In the afternoons, Scouts will have the opportunity to choose their own merit badge classes. At every leader's meeting, a paper of the requirements done by each day will be given out to be signed by the Scoutmaster, granting the area director permission to sign off on their scout book.

How Leaders Can Take Advantage of This Program:

While planning your CP2 attendance, talk to new Scouts and their parents about this program and what it offers. Encourage their attendance and encourage completion of some (or all) of the requirements which are not taught at summer camp. To get the most out of the CP2 program we ask that new Scouts attain the "Scout" rank before summer camp starts. This will allow the CP2 staff to follow the Leader's Guide and start with completion of Tenderfoot requirements. Although this is highly encouraged and very helpful in progressing with the program, it is not required. CP2 welcomes all first-year campers to its program regardless of rank completed.

Program Schedule

First Year Camper Program

First Year Camper	CP^2	CP^2	CP^2	LUNCH	Choose your MB	Choose your MB
-------------------	------	------	------	-------	----------------	----------------



50 MILE TREK

CANOE/ KAYAK FROM HARLINGEN TO LAGUNA STATION



The Rio Grande Council is excited to offer the opportunity to take an exciting float trip down the Arroyo Colorado across the scenic Laguna Madre to Laguna Station on the Brazos Santiago Pass. You will arrive at Camp Perry in Rio Hondo on Sunday for sign-in and skills evaluation. You will have the opportunity to see the transition from a small freshwater river to a large brackish waterway to a hypersaline bay, and all the unique flora and fauna of this unique environment.

On Monday morning, your adventure begins. Your expedition crew and craft will be transported to the banks of the Arroyo Colorado in Harlingen, Texas. The first day will consist of a ten-mile trip from Harlingen to Camp Perry along the Arroyo Colorado. Lunch will be at the eight-mile mark at the Spotted Sea Trout Park. After lunch, the group will stop at Camp Perry for the evening.

Day 1 - The first day will serve as an additional skills check and allow those unable to complete the trip to remain at Camp Perry.

Day 2 - Will begin at Camp Perry and end at Adolph Thomae County Park.

Day 3 - Will begin at Adolph Thomae County Park and end on South Padre Island.

Day 4 - Will begin on South Padre Island and end on South Padre Island.

Day 5 - Will begin on South Padre Island, and the float portion will end at Laguna Station on the southern end of South Padre Island. After this, transportation back to Camp Perry will be provided.

Meals will be at Camp Perry Sunday evening, Monday morning and evening, and Saturday morning. The remaining meals will be "packed" in the craft along with the camping gear.

Interested in participating in this Trek? Additional details and regulations will be released soon. Please contact our Trek Coordinator for information: Name Name (123) 456-7890



PROGRAM SCHEDULE

Themed Days



99 YEARS OF LOOKING THIS COOL
Wear your favorite pair of sunglasses

Monday



TUESDAY

ALOHA TO A CENTURY IN SCOUTING

Wear a Hawaiian Shirt



WAYBACK WEDNESDAY
DRESS IN NINETIES ATTIRE



OA Callout
Wear OA sash!

THURSDAY

DRAFTED INTO THE HOTTEST CAMP IN TEXAS
Wear a jersey to support your favorite team



CAMP PERRY SPIRIT DAY
Wear a CP shirt to campfire to celebrate 99 years of fun



Friday

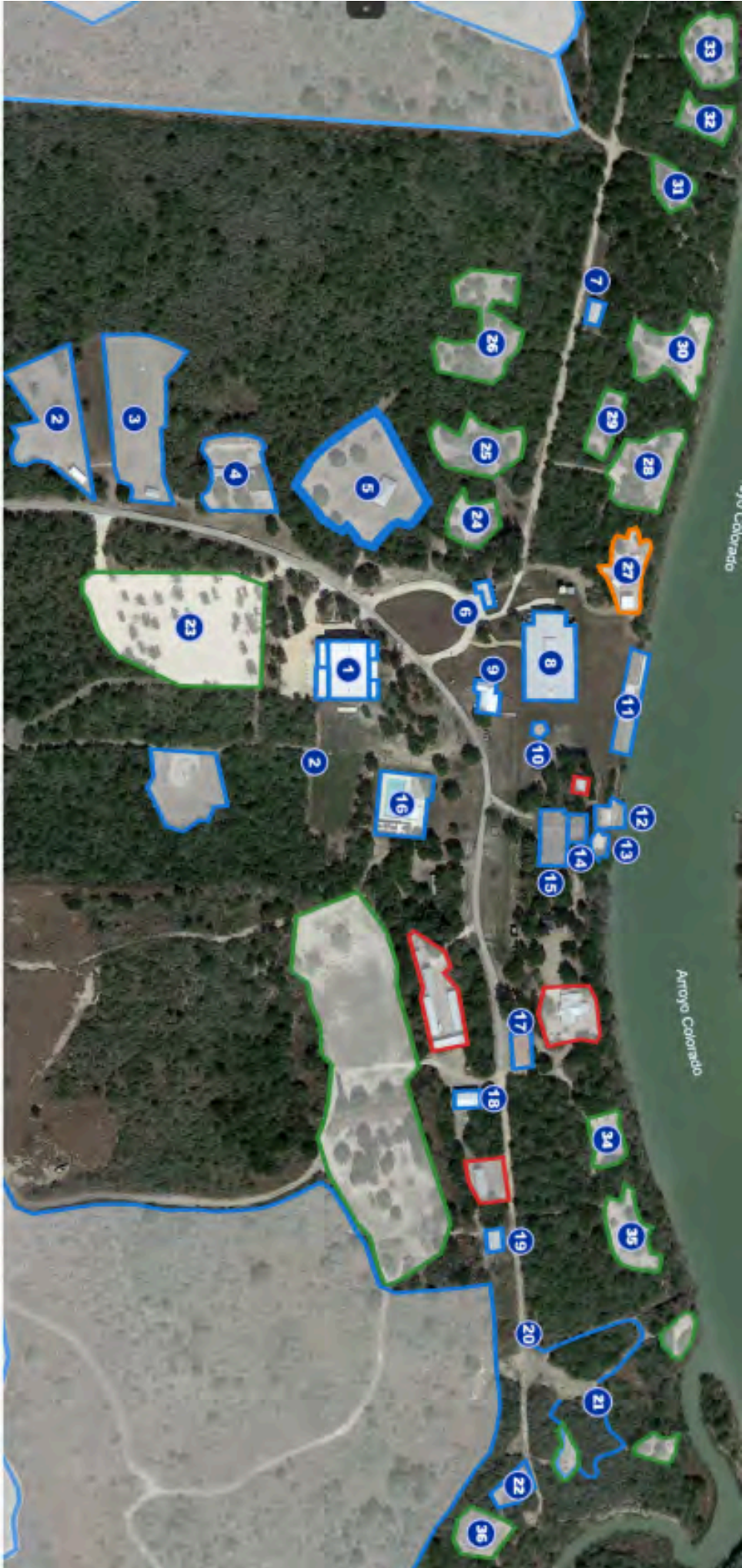
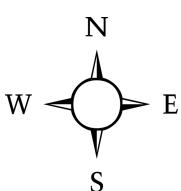


99 YEARS OF TRADITION WHO WILL MAKE HISTORY?

Think your troop has what it takes to be legendary? Prove it! Unleash your Camp Perry Spirit by diving into our "Beat the Heat" daily themes. From shades to jerseys, every costume counts toward the most prestigious honor at camp: The Embrace the Spirit Award. One week. Five themes. Only one troop leaves as the 2026 Champion. Will it be yours?



CAMP PERRY MAP



CAMP CHARLES F. PERRY
FM 420
 Rio Hondo, Texas
 Est. since 1927

- 1. Health and Fitness Building
- 2. Shot Gun Range
- 3. Archery Range
- 4. Rifle Range
- 5. Handicraft Pavilion
- 6. Quonsetmaster Building
- 7. North Latrines
- 8. Dining Hall
- 9. STEM Building
- 10. Flag Pool
- 11. Fishing Dock
- 12. Boating Docks
- 13. Amphitheater
- 14. OA Lodge
- 15. Old Dining Hall
- 16. Swimming Pool
- 17. Mesquite Building
- 18. BMX Storage Building
- 19. South Latrines
- 20. Spooky Trails
- 21. Scary Trails
- 22. Nature Pavilion
- 23. East Parking
- 24. Huissache Camp*
- 25. Indigo Camp
- 26. Jirafina Camp
- 27. ADA Camp
- 28. Armadillo Camp*
- 29. Bobcat Camp*
- 30. Chachalaca Camp
- 31. Dove Camp
- 32. Ebony Camp
- 33. Falcon Camp
- 34. Killdeer Camp*
- 35. Lone Pioneer Camp*
- 36. Mesquite Camp



EVENING PROGRAM

CAMP CARNIVAL

Tuesday, June 23, 2026



You're invited to the 3rd Annual Camp Carnival! As we celebrate nearly a century of Camp Perry, we're cooling things down with a massive Hawaiian Carnival Night! We're turning Camp Perry into a tropical paradise for one night only. Travel from booth to booth to participate in special challenges, games, win prizes, and enjoy snacks from our trading post with a tropical twist. It's the ultimate way to Beat the Heat and make memories that will last another hundred years.

Don't forget to wear your Hawaiian shirts!





FAMILY NIGHT

Wednesday, June 24, 2026



Family Night is a special evening at Camp Perry where all families are invited to join their scout for dinner and enjoy some quality family time at Camp Perry. Upon arriving, please sign in at our office, located in the gym, to pick up your meal ticket and guest pass. Dinner will be served in the dining hall, where you will be able to sit and enjoy a delicious meal by our amazing kitchen staff. After dinner, everyone is invited to join us for the Order of the Arrow's call out ceremony happening shortly after.

Meal Prices for guests will be announced at a later date.



ORDEAL CALLOUT

Wednesday, June 24, 2026

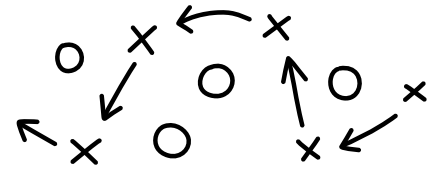


The Order of the Arrow is Scouting's National Honor Society, chartered by the National Council of Scouting America. As a service-oriented honor society, Wewanoma Lodge supports camping and Camp Perry year round in a variety of ways, one of which is sponsoring several Camperships for scouts. Youth and adult Wewanoma Lodge leaders will occasionally be present throughout camp. The OA Camp Chief will coordinate Wednesday night's OA Callout Ceremony, starting in the Waterfront Amphitheater at 7:45 PM. Immediately following, the Lodge will hold an Ice Cream Social in the OA Lodge for OA members and new candidates at camp after the Callout ceremony.



WORLD CUP WATCH PARTY

Thursday, June 23, 2026



Are you ready to represent?

Grab your patrol, form a team, and enter the official Camp Perry Bracket! We're celebrating this summer's

World Cup with a soccer tournament to see who will be crowned the champions of our 99th year.

Not looking to take the field? No sweat! Head over to the "Cool-Down Zone" in the Dining Hall. We'll be airing the live World Cup matches in the AC so you can cheer on the pros while you beat the heat. Whether you're scoring goals or cheering from the "stands," it's going to be a world-class night!



OPENING CAMPFIRE
Monday, June 22, 2026

CLOSING CAMPFIRE
Friday, June 26, 2026

@ R.W. LISTON
AMPHITHEATER

@ R.W. LISTON
AMPHITHEATER

AWARDS



Camp Perry Spirit Award

Troops that show their Scout spirit may be granted the coveted Camp Perry Spirit Award. To be awarded this honor, Scout spirit must be present in a natural, everyday fashion. True evidence of Scout spirit comes from the way a troop behaves at the swimming pool, to the way a patrol gives a special effort to make camp better for everyone. For this award, keep in mind the eighth point of the Scout Law and the Scout Slogan.

Camp Perry Award for Model Campsites

A troop's campsite arrangement and orderliness reflect upon the troop's standards. Living in a clean and well organized campsite helps a Scout feel pride in himself, his unit, and in Scouting. Listed below are aspects of a well-organized troop campsite. A Camp Commissioner will visit your campsite during the day. The commissioner may share ideas with you about ways to improve your site. Troops are graded on the rubric at the end of this guide.

Honor Camper

The youth and adult leaders of each troop may select honor campers for their patrols near the end of the camp week. These campers should exemplify Scout spirit, a positive attitude, and should stand out from the other Scouts in the troop. The maximum number of honor campers for each troop is one per patrol. Other Scoutmasters may also nominate Scouts from another troop who truly exemplify the Scout Oath and Law. **All nominations should be turned in to the Program Director and will be due on Thursday after dinner.**



PROGRAM AREAS



WATERFRONT



OPEN FOR BUSINESS

Our comprehensive waterfront program offers an array of exhilarating water sports, including canoeing, kayaking, motor boating, and rowing, each providing Scouts with the opportunity to earn merit badges while mastering the skills of navigation and water safety. Under the guidance of expert instructors, Scouts will learn to steer their way through the basics to advanced techniques, ensuring they gain confidence and proficiency on the water. The waterfront is not just about skill acquisition; it's a place where camaraderie is built, and leadership is forged. Join us at the docks for a summer filled with challenges, learning, and unforgettable aquatic adventures!





POOL



MAKE A SPLASH

Immerse yourself in the cool, refreshing waters of Camp Perry's pool, a central highlight of our summer camp experience. Perfect for both beginner swimmers and aquatic experts, our pool area offers a variety of water-based activities designed to teach valuable life skills, promote physical fitness, and ensure endless fun under the sun. From learning essential swimming techniques to engaging in spirited pool games, scouts will have the opportunity to earn merit badges while making a splash. Safety is our top priority, with lifeguards on duty to oversee all water activities, ensuring a safe and enjoyable environment for every scout. Dive into a summer of aquatic adventures at Camp Perry, where memories are made in the water!





HANDICRAFT



CREATIVE SPARK

Unleash your artistic potential at the Handicraft Area, a vibrant hub of creativity and skill at Camp Perry. Offering a diverse range of activities, from basket weaving and painting to movie making and graphic arts, this area allows Scouts to explore different mediums and express themselves artistically. Under the guidance of skilled staff, Scouts will craft projects that not only earn them merit badges but also provide a tangible connection to their creative spirits. Whether they're weaving intricate patterns, capturing emotions on canvas, directing short films, or designing digital masterpieces, each Scout will find a unique way to tell their story. Step into our Handicraft Area and transform your ideas into art, creating memories and masterpieces that last a lifetime.





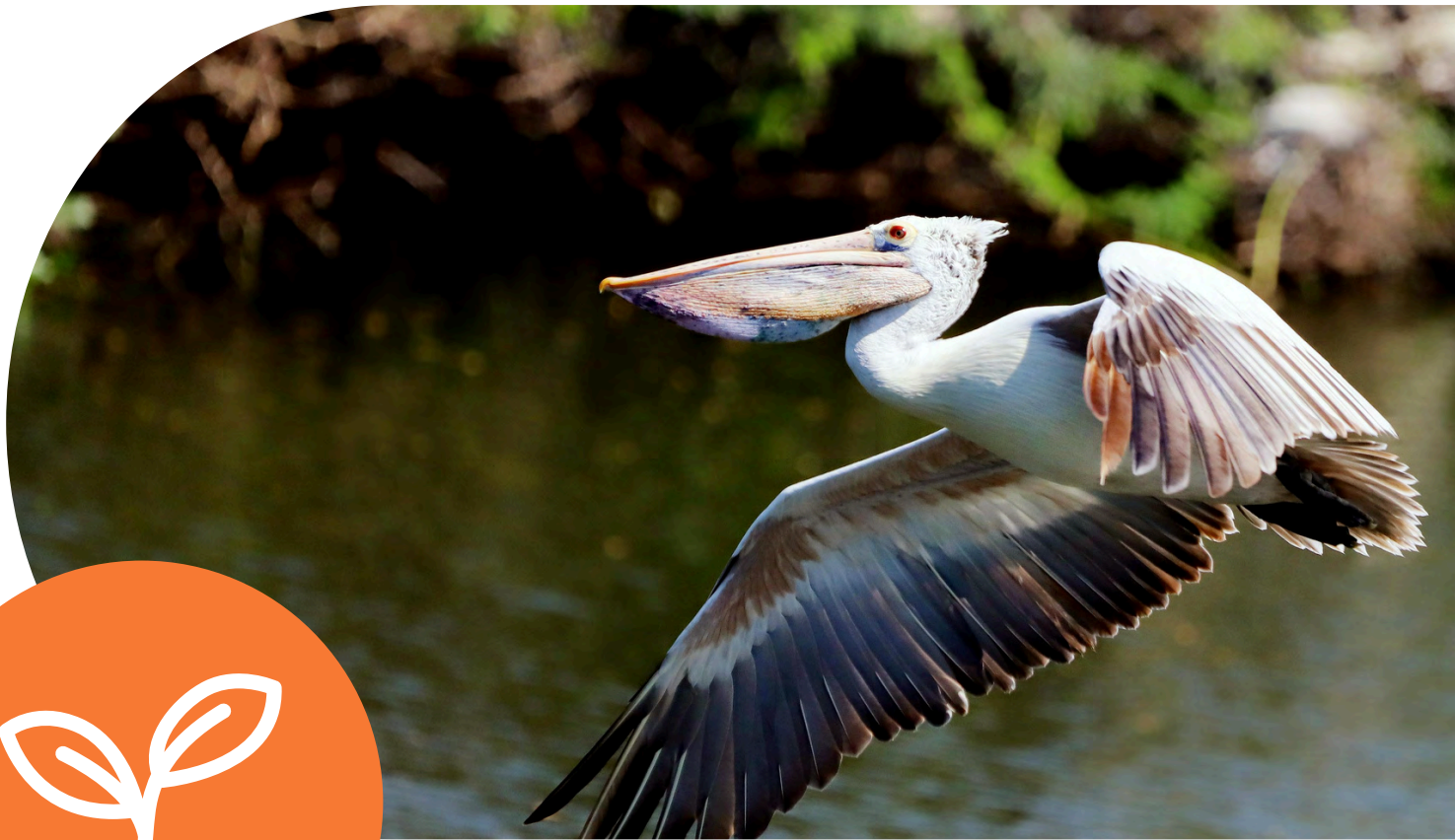
OUTDOOR SKILLS



ADVENTURE AWAITS

Embark on a journey of discovery and skill-building in the great outdoors with Camp Perry's Outdoor Skills program. Here, Scouts have the chance to earn merit badges in camping, cooking, pioneering, orienteering, and geocaching. Each activity is designed to challenge Scouts, enhance their Scouting skills, and deepen their appreciation for nature. Under the guidance of experienced instructors, Scouts will learn how to set up camp in the wilderness, prepare meals over an open fire, construct sturdy structures using traditional pioneering techniques, navigate through camp's terrain, and use GPS Geocaching technology to find hidden treasures. The Outdoor Skills Area is not just about learning; it's about applying knowledge in real-world scenarios, fostering independence, teamwork, and a lasting respect for the environment. Join us for a hands-on adventure that transforms basic outdoor activities into life lessons and leadership experiences.





NATURE



CALL OF THE WILD

This immersive nature and conservation area offers Scouts the opportunity to earn the Nature merit badge, alongside specialized badges in bird study, mammal study, and fishing. Each program is carefully designed to foster a deep respect and understanding of the natural world. Scouts will learn to identify various bird species, understand the behaviors of different mammals, and master the art of angling. Our expert guides and naturalists help Scouts to not only observe but interact with the ecosystem in meaningful ways, promoting conservation and wildlife appreciation. Whether they're by the lakeside waiting for a catch, or quietly observing wildlife, Scouts will gain invaluable skills and memories that last a lifetime. Join us at Camp Perry, where nature's secrets unfold and inspire every Scout.





RANGE & TARGET



SHOOTING SPORTS

Here, Scouts can engage in archery, rifle, and shotgun shooting, learning the finer points of each under the guidance of certified BSA and NRA instructors. Our programs are designed to teach safety, responsibility, and skillful handling of equipment while fostering an appreciation for the shooting sports. Scouts will have the opportunity to earn merit badges as they improve their accuracy, learn about the mechanics of firearms, and practice the principles of good sportsmanship. The range is a place of focus and precision, where every participant is encouraged to set personal goals and achieve them through dedication and practice. Whether they're drawing a bow, sighting a rifle, or firing a shotgun, Scouts will develop confidence and capabilities that extend beyond the range. Join us for a season of safe, educational, and empowering shooting experiences at Camp Perry!





HEALTH & SAFETY



FIRST AID AND SAFETY

This area offers the opportunity to earn merit badges in First Aid, Search and Rescue, and Safety, providing Scouts with the knowledge and skills to respond effectively in emergency situations. Through practical hands-on learning and real-life simulations, Scouts will master first aid skills, develop the ability to assess and react to various scenarios, and learn to maintain safety in both everyday and high-risk situations. Guided by professionals and trained staff with expertise in emergency response and safety education, our program is designed to empower Scouts with confidence and competence that will serve them for a lifetime. Join us in building a foundation of courage and care that can truly make a difference.





FIRST YEAR CAMPER



CAMP PERRY PIONEERS

Camp Perry offers the CP2 program to provide structured, basic scout skills as a part of the summer camp program for the first-year camper. The program involves new scouts in a patrol setting, led by CP2 staff members. Scouts will participate in skills instruction and other advancement situations throughout day. Scouts will be organized into patrols, using the patrol method, and will work together during the same class all week. Scouts enrolled in the CP2 program are not restricted to only Tenderfoot requirements, but will progress toward Second and First Class requirements. There will also be requirements completed towards First Aid, Swimming and Leatherwork Merit Badges. Totin' Chip, Firem'n Chit, and the Paul Bunyan Woodsman Award will be also be offered. Merit badge completions are not guaranteed, but are possible.





POLICIES & PROCEDURES

EMERGENCY PROCEDURES

General Emergency Procedures

- Report all emergency situations (fires, accidents, etc.) to the nearest staff member.
- A staff member will report directly to the Camp Director or Program Director
- If the situation is evaluated as a camp-wide emergency, the bell near the dining hall will be rung, and the air horns/megaphone will be sounded to alert all persons in camp.
- On hearing the bell and signal: All staff members will gather at the flag pole at the parade grounds. All Scoutmasters, Troop Leaders and Scouts will report to the flag poles in the parade grounds.
- Emergency instructions will be given at the flag poles.

Fire

Campsites

- Drop all canvas immediately after checking whether tents are occupied.
- Notify Camp Director, Program Director or Quartermaster immediately.
- DO NOT ATTEMPT TO EXTINGUISH THE FIRE. NO TENT IS WORTH THE POSSIBILITY OF INJURING A SCOUT OR SCOUTER.

Buildings

- Evacuate building immediately.
- Notify Camp Director, Program Director or Quartermaster immediately.
- Stay away from building until given further direction by the Camp Director, Program Director or Quartermaster.

On camp properties (brush or grass)

- Contact any campsite in path of fire to evacuate the campsite (USE ALTERNATE CAMP TRAILS IF NEEDED).
- Notify Camp Director, Program Director or Quartermaster immediately.
- A camp-wide emergency will be signaled.

Lost Camper

- In the event a camper is reported lost, immediately contact the Camp Director or Program Director. At the same time, send a staff member or a reliable camper with a buddy to the missing camper's campsite, his scheduled activity area for that period as well as any other likely place to determine the accuracy of this report. After these searches reported have returned negative, other likely spots have been searched, and the Camp Director or his representative has determined that the missing camper will not be found easily, then the alarm will be sounded for a camp-wide emergency.
- If the assembly shows the camper to still be missing, consult with anyone who might have additional knowledge of his whereabouts and send additional searchers to those locations. Additional steps to be taken in sequence are: Arroyo Colorado bank search and camp-wide search until missing camper is found or the authorities are notified.



EMERGENCY PROCEDURES

Hurricane

- When severe weather related to the approach of a hurricane is reported to reach Camp Perry within 24 hours, all troop leaders will be notified to evacuate their Scouts after breaking down their campsites.
- Staff members will be assigned to assist camp staff in gathering and storing of loose equipment to prevent loss and damage to both equipment and buildings.
- When the staff and the Camp Director determine that the camp is ready to weather the storm, all staff members will be released to return to their homes.

Lightning

- During periods of severe thunderstorms and lightning, all campers and staff members will take cover in the nearest building. All persons will refrain from making contact with metal flag poles, wall supports, etc.

Tornadoes

- Warning: when a tornado warning is given on the television or radio, an air horn will be sounded: three short blasts, three long blasts, three shorts blasts (SOS) to alert all persons in camp.
- Anyone hearing the signal will immediately implement normal emergency procedures and instruct everyone to take cover in low-lying areas such as the Arroyo Colorado bank or ditches. IF CONDITIONS ARE SEVERE TAKE COVER IN LOW LYING AREA IMMEDIATELY
- Sounding a series of three long blasts on an air horn will sound all clear.

Flooding

- In case of probable flooding, the boat dock area will be cleared of all equipment providing adequate time.
- Everyone will stay clear of the Arroyo Colorado and the Little Arroyo. Everyone will assemble at the dining hall for further instructions.

Illness

- All serious accidents or illness will be reported directly to the Health Officer at the Health Lodge.
- **If the Health Officer is not present, go immediately to the camp office.**
- Report the nature and location of the accident to the Health Officer or the key staff member in charge and standby to direct a first aid team to the victim.



POLICIES AND PROCEDURES

Alcohol & Drugs

It is the policy of the Boy Scouts of America that the use of alcoholic beverages and controlled substances is not permitted at encampments or activities on property owned and/or operated by the Boy Scouts of America, or at any activity involving participation of youth members.

Tobacco/Nicotine

Adult leaders should support the attitude that they, as well as youth, are better off without tobacco in any form and may not allow the use of tobacco products at any BSA activity involving youth participants. This includes the use of electronic cigarettes, personal vaporizers, or electronic nicotine delivery systems that simulate tobacco smoking. All Scouting functions, meetings, and activities should be conducted on a smoke-free basis, with smoking areas located away from all participants located at the overflow parking lot/dumpster area. References: Scoutmaster Handbook, No. 33009, and Boy Scout Handbook, No. 34554

Medical Marijuana

It is unacceptable for anyone to use or be under the influence of medical marijuana at or during any Scouting activity.

Campsites & Equipment

Each Campsite has a definite size regarding Scout capacity. This is done to accommodate small and large troops alike. The Camp Director reserves the right when necessary, to transfer a troop to a site that would be best for the troop.

Campsites

Your campsite is your home. Scouts and Scouters should not enter another troop's campsite without permission. Your campsite is your troop's private property for the duration of your stay, and unauthorized visits and/or "raiding" will be cause for dismissal from camp.

Campsite Equipment

Each campsite is equipped with a metal fire ring and picnic table. Fire rings will not be allowed if a fire ban is in effect. Fire rings should not be physically moved according to Leave No Trace principles.

Health and Safety

A staff of commissioners will be available to help Scout leaders solve problems during their stay. They will also conduct a daily campsite health and safety inspection beginning Monday morning.

Inspections

Housekeeping is an important part of camping, each patrol and troop is expected to keep its own site and assigned camp area clean and orderly at all times. Campsites will be inspected daily.



POLICIES AND PROCEDURES

Trash

Each troop must bring a trash container and trash bags to be used to keep camp clean. Trash will need to be collected and placed in the side parking lot dumpster on a daily basis in order to keep critters away.

Firewood

Fires in campsites may be permitted only with the approval of the Camp Director, provided there is not a fire ban.

Volatile Liquid & Fuel

Camp stove fuel, propane bottles, and similar products must be declared at check-in. Liquid fuel must be stored in approved containers and kept at a camp fuel storage container.

Fireworks

The Rio Grande Council, BSA prohibits the possession or use any type of fireworks on camp property. Violators will be dismissed from camp immediately.

Campers

Only registered members of Scouts BSA may attend camp. Cub Scouts, Venture Scouts, Explorers, or other non-Scouting youth are NOT permitted at camp during the week except for valid reasons to visit and must check in at the camp office on arrival and departure.

Buddy System

Scouters are reminded that the Buddy System should be used at all times while at camp, not just during swimming time.

Hazing

Hazing or initiation of any form is considered child abuse, and will absolutely not be tolerated under the auspices of Scouting America. Any unit or Scout who violates this policy will be dismissed from camp immediately.

Telephones

In this day of cell phones and electronic devices, a wise Scout leader should monitor Scout use. Cell phones are not to be used during meals, merit badge classes, or at flag raising/lowering ceremonies.

Uniform

Each Scout should have at least one complete Official BSA Uniform to be worn each evening at dinner and flag retreat. In addition, some evening program activities, such as campfires, and religious services require use of the Official BSA Uniform. BSA policy recognizes official camp and BSA t-shirts used with Scout shorts or pants and socks as an official activity uniform.

Trading Post

Items such as water & sports drinks, along with ice cream, snacks, soft drinks, handicraft kits, BSA literature, t-shirts, caps, etc. will be available. Credit cards are now accepted.

POLICIES AND PROCEDURES

Lost & Found

All lost and found items should be turned in and claimed at the camp trading post. All campers are encouraged to mark their troop number and name on everything they bring to camp. DO NOT TAKE VALUABLES OR MONEY INTO THE POOL SHOWER AREA.

Firearms & Knives

No personal archery equipment, slingshots, paintball gun type items, or firearms of any type are never permitted on camp property. Knives must be folding, preferably with locking blades.

Adult Leadership

BSA Policy requires at least two (2) TRAINED adult leaders, which includes Scoutmasters, Assistant Scoutmasters and Troop Committee Members, be in camp at all times; one (SM's and CM's) must be 21 years or older, the second (ASM's) must be 18 or older. ALL ADULTS MUST BE REGISTERED MEMBERS OF THE BOY SCOUTS OF AMERICA and be listed on the Summer Camp Adult Roster. All adults must have completed and approved the annual criminal background check (located on the last pages of this guide). All adults must have completed the BSA Youth Protection Training. YOU WILL NOT BE ALLOWED ON CAMP PROPERTY AND YOUR UNIT WILL HAVE TO WAIT UNTIL AT LEAST TWO ADULTS ARE PROCESSED.

Rotation/Replacement of Registered Adult Leaders

Adult leaders may rotate with other adult leaders from their troop, if necessary. The Camp Director must be notified of any rotations/replacements, via a written or printed schedule given at check-in. Incoming replacement adult leaders must sign in at the office and the outgoing adult leaders must sign out. The payment of one camp registration fee covers meals for one person, so if both outgoing and replacement adult leaders want to eat at the same meal-time, then one of them must purchase a meal ticket from the camp office beforehand. ALL replacement adult leaders MUST meet the same requirements listed in the Adult Leadership section above.

Parents/Guardians and Visitations

Parents/Guardians who wish to visit Camp Perry, other than during Family Night or due to an emergency, must be allowed to do so. However, they need to notify one of their troop's adult leaders before arriving so one of the adult leaders may meet them and help them sign in at the office. Visiting parents/guardians may not spend the night at Camp Perry, and must be signed out and depart no later than 9:15 PM.

Automobiles

Cars, trucks, or any other motor vehicles are not permitted past the parking lot and driveway in front of the camp office. Vehicles must park in designated parking areas; and, absolutely NOT on the grass or side of the road, for camper safety. Violators will be towed at the owner's expense. All trailers must remain in the parking area in their designated area.

Wildlife & Pets

Pets of any kind are not permitted at camp. Most feral animals on camp property are harmless, when left alone.



TROOP EQUIPMENT

- Tents must display the warning "NO FLAMES IN TENTS" near tent entrance.
- Don't forget to bring duct tape, thumb tacks, vice grips and other useful tools.
- Ice may be picked up in the kitchen.
- Ask in the camp office or Camp Director if you have any questions.

<ul style="list-style-type: none">--- Patrol flags--- Lanterns (propane is favored)--- Matches or lighters--- Dining flies, poles, stakes--- Hammers and other hand tools--- 5-Gallon water jugs--- Ice chests--- Trash bags--- Lockable storage container--- Troop first aid kit--- Compass--- Shovels, rakes, hoes, bow saws, loppers--- Rolls of surveyors marking tape--- "Fine" black sharpie ® markers--- Camp chairs--- Hand Sanitizer--- Extra face masks--- Hand washing station	<ul style="list-style-type: none">--- Troop sign (should include Troop #)--- Troop flag--- American flag--- Twine & poles for lashing <p>Bulletin board:</p> <ul style="list-style-type: none">--- Bulletin board--- Camp roster--- Troop duty roster--- Emergency procedures--- Push pins, etc. (for bulletin board)--- Scout schedule (only first name and last initial can be displayed)--- Clock <p>Paperwork</p> <ul style="list-style-type: none">--- Troop advancement record--- Troop Merit Badge pamphlet library--- Leader's Guide (This document)
--	---



RECOMMENDED INDIVIDUAL SCOUT EQUIPMENT

<p>Required</p> <ul style="list-style-type: none"> ___ Signed Medical Report Form ___ Scout Handbook ___ Scout Uniform and Belt ___ Socks & Scout Socks (7-8 pairs) ___ Shorts & Scout Shorts ___ 5 -6 shirts (no tank tops) ___ Shoes (closed-toe) or Hiking Boots ___ Water Shoes (for swimming pool or waterfront) ___ Clothes for Messy Wars (might get stained) ___ Cap or Hat (for sun protection) ___ Underwear (7-8 pairs, at least) ___ Sleeping Clothes ___ Sleeping Gear (sheets are fine) ___ Pillow ___ Cot ___ Personal First Aid Kit ___ Poncho or Rain Coat ___ Towels & Wash cloth ___ Soap & Shampoo ___ Toothbrush & Toothpaste ___ Comb, Brush & Mirror ___ Flashlight (and extra batteries) ___ Pocket Knife & "Totin' Chip" ___ Insect Repellent (no aerosol) ___ Swimsuit (No cutoffs) ___ Sunscreen ___ Boy Scout Handbook ___ Water Bottle or Canteen and Cup ___ Spiral Notebook ___ Pen or Pencils ___ Completed Merit Badge Work ___ Spending Money ___ Matches / Lighter & Firestarter ___ "Firem'n Chit" ___ Wristwatch 	<p>Optional</p> <ul style="list-style-type: none"> ___ Backpack ___ Fishing Rod & Tackle ___ Camera ___ Bible and/or Prayer Book ___ Work Gloves ___ Dirty Clothes Bag ___ Combination Lock ___ Mosquito Netting ___ Rash Guard (for aquatic activities) ___ Sunglasses ___ Battery-Operated Fan ___ Trail Food/Snacks <p>Water Survival & ATV Clothing (for Scouts taking the Swimming or Lifesaving Merit Badges)</p> <ul style="list-style-type: none"> ___ Shoes ___ Socks ___ Swimsuit (Swimming & Lifesaving only) ___ Long Pants ___ Belt ___ Long-Sleeved Shirt <p>Do NOT Bring</p> <ul style="list-style-type: none"> • Fireworks • Sheath or hunting knives • Bicycles • Pets • Hammocks • Personal Firearms • Jewelry or other expensive items • Personal Bows & Arrows
---	---

- Make sure to mark all personal items with name and troop number.
- Personal valuables (wallets, money, cell phone) should be left in a safe place and not visible.
- Health and safety are of utmost importance to Camp Perry Staff!!
- Scoutmasters: Remind Scouts and parents that closed-toed shoes are to be worn at all times unless you are in your tent, pool, or showering.



ADULT LEADER APPLICATION FOR PARTICIPATION

This form must be filled out *completely* and legibly. This form is REQUIRED from all adults over the age of 18 who will attend camp. Please print and use blue or black ink.

First Name: _____ Middle: _____ Last: _____

Address: _____

City: _____ State: _____ ZIP: _____

Phone #: _____ Birthdate: _____ Sex: _____

Driver License

State: _____ DLN#: _____

Social Security Number: _____

1. Are you registered with the Boy Scouts of America? ____ Yes ____ NO

If no, you must complete the registration process **before** attending camp. All participants must attach a copy of their registration card or an *official BSA* copy of the unit roster showing their name as a registered member of that unit.

2. Have you ever been convicted of a felony or misdemeanor? (You may answer NO if your conviction was ordered sealed, expunged or eradicated) ____ Yes ____ No

Conviction of a crime is not an automatic bar to participation. All circumstances will be considered, including what you were convicted of and how long ago. You must provide complete information about any conviction by attaching a separate statement.

3. Is your BSA Online Youth Protection Training course current? ____ Yes ____ NO

If NO, you MUST complete this course and attach a copy of the certificate provided upon successful completion of the training. Training may be completed at the BSA Online Learning Center: <http://myscouting.org> if you have already completed the course, please attach the copy of the certificate to this form.

4. Personal information provided at the top of the form will be used to conduct a search in the Sex Offender Registration database to meet this state requirement.

The system used for the criminal background check will also conduct a check in the sex offender database. Both searches will be conducted at one time in our office, so there is no need to attach searches done by the unit.

5. As of May 16, 2010, ALL adults participating in a licensed youth camp in the state of TX MUST have a criminal background check (conducted annually) in order to determine if any person may be precluded from participation in a state licensed camp based on the results of this check.

The National Office of the BSA has made arrangements for councils in the state of Texas to conduct these background checks for all participants of their summer camp programs. The Rio Grande Council will conduct these checks on all participants to ensure compliance with the Texas Youth Camp Act.

By signing and submitting this application, you are authorizing a criminal background check and a search in the Sex Offender Registration database of yourself. This check will be made from public record sources. You also confirm that the information provided and attached to this form is true and not falsified in any way.

You must also sign the Disclosure & Authorization Form Attached.

Signed: _____ Date: _____

REQUIRED ACTIVITY CONSENT FORM & APPROVAL BY PARENTS/LEGAL GUARDIAN

The recommended use of this form is for the consent and approval for Cub Scouts, Boy Scouts, Venturers, and guests to participate in a trip, expedition, or activity. It is required for use with flying plans.

First name of participant _____ Middle initial _____ Last name _____

Birth date (month/day/year) _____ / _____ / _____ Age during activity _____

Address _____

City _____ State _____ Zip _____

Has approval to participate in (name of activity, orientation flight, outing trip, etc.) **BMX Biking at Camp Perry**

INFORMED CONSENT, RELEASE AGREEMENT, AND AUTHORIZATION

I understand that participation in Scouting activities involves the risk of personal injury, including death, due to the physical, mental, and emotional challenges in the activities offered. Information about those activities may be obtained from the venue, activity coordinators, or local council. I also understand that participation in these activities is entirely voluntary and requires participants to follow instructions and abide by all applicable rules and the standards of conduct.

In case of an emergency involving my child, I understand that efforts will be made to contact me. In the event I cannot be reached, permission is hereby given to the medical provider to secure proper treatment, including hospitalization, anesthesia, surgery, or injections of medication for my child. Medical providers are authorized to disclose protected health information to the adult in charge and/or any physician or health care provider involved in providing medical care to the participant. Protected Health Information/Confidential Health Information (PHI/CHI) under the Standards for Privacy of Individually Identifiable Health Information, 45 C.F.R. §§160.103, 164.501, etc. seq., as amended from time to time, includes examination findings, test results, and treatment provided for purposes of medical evaluation of the participant, follow-up and communication with the participant's parents or guardian, and/or determination of the participant's ability to continue in the program activities.

With appreciation of the dangers and risks associated with programs and activities including preparations for and transportation to and from the activity, on my own behalf and/or on behalf of my child, I hereby fully and completely release and waive any and all claims for personal injury, death, or loss that may arise against the Boy Scouts of America, the local council, the activity coordinators, and all employees, volunteers, related parties, or other organizations associated with any program or activity.

NOTE: The Boy Scouts of America and local councils cannot continually monitor compliance of program participants or any limitations imposed upon them by parents or medical providers. List any restrictions imposed on a child participant in connection with programs or activities below and counsel your child to comply with those restrictions.

List participant restrictions, if any: _____ None

Participant's signature _____ Date _____

Parent/guardian printed name _____ Parent/guardian signature _____ Date _____

Area code and telephone number (best contact and emergency contact) _____ Email (for use in sharing more details about the trip or activity) _____

Contact the adult leader with any questions:

Name _____ Phone _____ Email _____



REGISTER TODAY
WWW.RIOGRANDECOUNCIL.ORG

CAMP LEADERSHIP

Gabriel Rodriguez | Camp Director
E. gabe@gaberod.net | P. (956) 369-8008

COUNCIL OFFICE

Rio Grande Council Service Center
6912 W. Expressway 83
Harlingen, TX 78552
(956) 432-0250

